

STANDARD ARRIVAL  
CHART - INSTRUMENT  
(STAR) - ICAO

TRANSITION ALTITUDE  
10000 FT

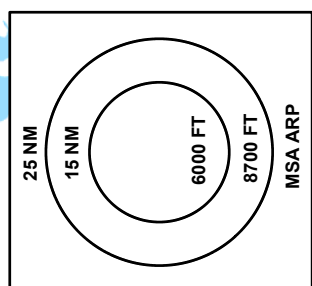
SHYMKENT TOWER 125.9  
SHYMKENT ATIS (EN) 119.2  
SHYMKENT ATIS (RU) 126.6

ADESA 1M/1T, BAMUT 1M,  
BARAR 1M, DOSOR 1M,  
KOLAM 1M, TULGA 1M.

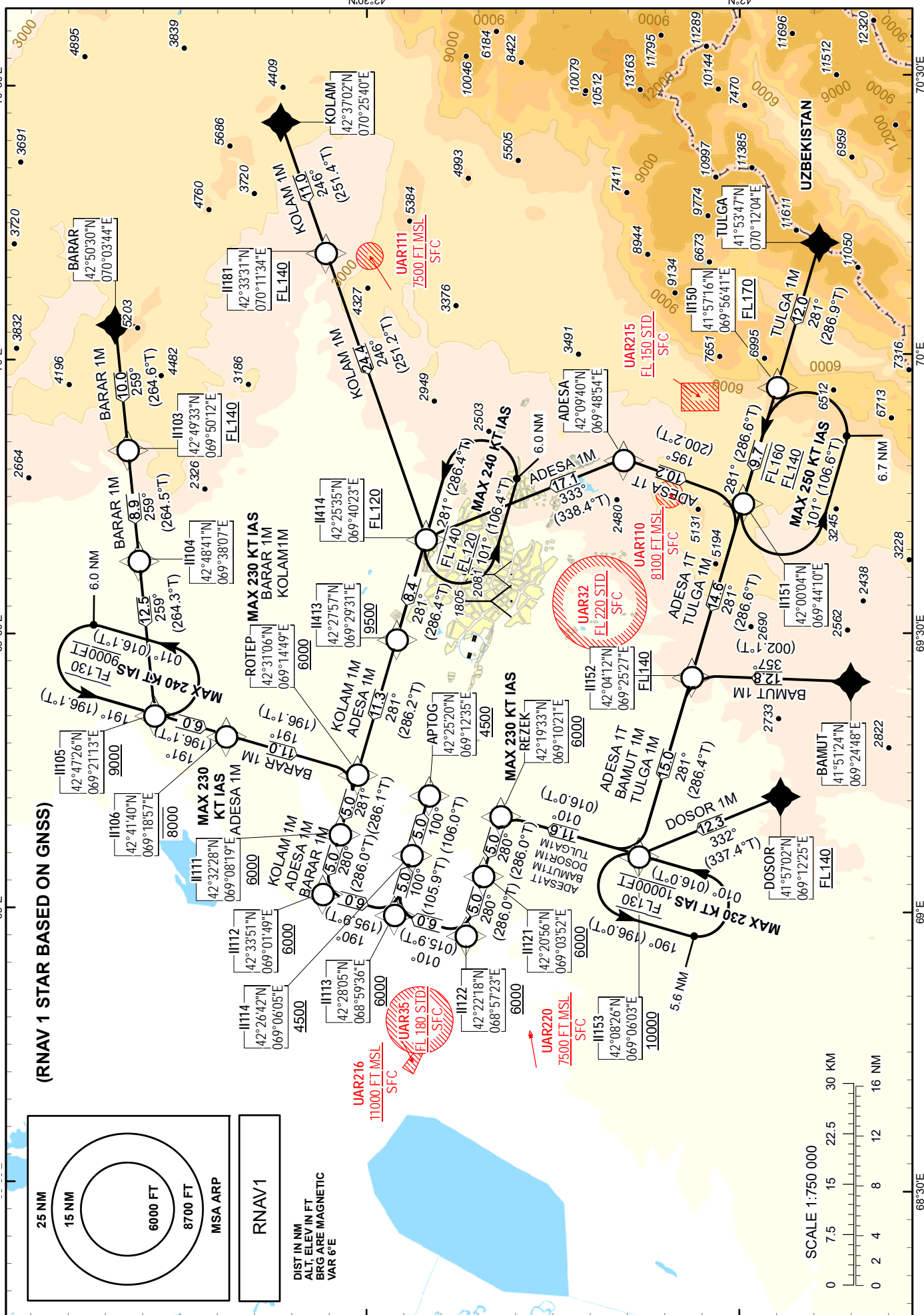
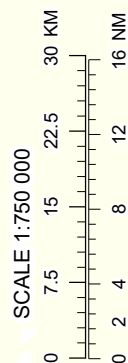
SHYMKENT  
RWY 10

CHANGE: New chart.

(RNAV 1 STAR BASED ON GNSS)



DIST IN NM  
ALT, ELEV IN FT  
BRG ARE MAGNETIC  
VAR 6°E



TABULAR DESCRIPTION

ADESA 1M											
Serial Number	Path Descriptor	Waypoint Identifier	Fly - over	Course °M(°T)	Magnetic Variation(°)	Distance NM	Turn Direction	Altitude FT	Speed KT	VPA (°)	Navigation Specification
10	IF	ADESA	-	-	+5.5	-	-	-	-	-	RNAV 1
20	TF	II414	-	333(338.4)	+5.5	17.1	R	+FL120	-	-1.1	RNAV 1
30	TF	II413	-	281(286.4)	+5.5	8.4	L	+9500	-	-2.8	RNAV 1
40	TF	ROTEP	-	281(286.2)	+5.5	11.3	-	+6000	-250	-2.9	RNAV 1
50	TF	II111	-	281(286.1)	+5.5	5.0	-	+6000	-230	-	RNAV 1
60	TF	II112	-	280(286.0)	+5.5	5.0	-	+6000	-	-	RNAV 1
70	TF	II113	-	190(195.9)	+5.5	6.0	L	+6000	-	-	RNAV 1
80	TF	II114	-	100(105.9)	+5.5	5.0	L	+4500	-	-	RNAV 1
90	TF	APTOG	-	100(106.0)	+5.5	5.0	-	+4500	-	-2.8	RNAV 1

ADESA 1T											
Serial Number	Path Descriptor	Waypoint Identifier	Fly - over	Course °M(°T)	Magnetic Variation(°)	Distance NM	Turn Direction	Altitude FT	Speed KT	VPA (°)	Navigation Specification
10	IF	ADESA	-	-	+5.5	-	-	-	-	-	RNAV 1
20	TF	II151	-	195(200.2)	+5.5	10.2	L	-	-	-	RNAV 1
30	TF	II152	-	281(286.6)	+5.5	14.6	R	+FL140	-	-0.6	RNAV 1
40	TF	II153	-	281(286.4)	+5.5	15.0	-	+10000	-	-1.9	RNAV 1
50	TF	REZEK	-	010(016.0)	+5.5	11.6	R	+6000	-230	-3.3	RNAV 1
60	TF	II121	-	280(286.0)	+5.5	5.0	L	+6000	-	-	RNAV 1
70	TF	II122	-	280(286.0)	+5.5	5.0	-	+6000	-	-	RNAV 1
80	TF	II113	-	010(015.9)	+5.5	6.0	R	+6000	-	-	RNAV 1
90	TF	II114	-	100(105.9)	+5.5	5.0	R	+4500	-	-	RNAV 1
100	TF	APTOG	-	100(106.0)	+5.5	5.0	-	+4500	-	-2.8	RNAV 1

BAMUT 1M											
Serial Number	Path Descriptor	Waypoint Identifier	Fly - over	Course °M(°T)	Magnetic Variation(°)	Distance NM	Turn Direction	Altitude FT	Speed KT	VPA (°)	Navigation Specification
10	IF	BAMUT	-	-	+5.5	-	-	-	-	-	RNAV 1
20	TF	II152	-	357(002.1)	+5.5	12.8	L	+FL140	-	-	RNAV 1
30	TF	II153	-	281(286.4)	+5.5	15.0	L	+10000	-	-1.9	RNAV 1
40	TF	REZEK	-	010(016.0)	+5.5	11.6	R	+6000	-230	-3.3	RNAV 1
50	TF	II121	-	280(286.0)	+5.5	5.0	L	+6000	-	-	RNAV 1
60	TF	II122	-	280(286.0)	+5.5	5.0	-	+6000	-	-	RNAV 1
70	TF	II113	-	010(015.9)	+5.5	6.0	R	+6000	-	-	RNAV 1
80	TF	II114	-	100(105.9)	+5.5	5.0	R	+4500	-	-	RNAV 1
90	TF	APTOG	-	100(106.0)	+5.5	5.0	-	+4500	-	-2.8	RNAV 1

BARAR 1M											
Serial Number	Path Descriptor	Waypoint Identifier	Fly - over	Course °M(°T)	Magnetic Variation(°)	Distance NM	Turn Direction	Altitude FT	Speed KT	VPA (°)	Navigation Specification
10	IF	BARAR	-	-	+5.5	-	-	-	-	-	RNAV 1
20	TF	II103	-	259(264.6)	+5.5	10.0	R	+FL140	-	-	RNAV 1
30	TF	II104	-	259(264.5)	+5.5	8.9	-	-	-	-2.1	RNAV 1
40	TF	II105	-	259(264.3)	+5.5	12.5	-	+9000	-	-1.5	RNAV 1
50	TF	II106	-	191(196.1)	+5.5	6.0	L	-8000	-	-3.1	RNAV 1
60	TF	ROTEP	-	191(196.1)	+5.5	11.0	-	+6000	-230	-1.7	RNAV 1
70	TF	II111	-	281(286.1)	+5.5	5.0	R	+6000	-	-	RNAV 1
80	TF	II112	-	280(286.0)	+5.5	5.0	-	+6000	-	-	RNAV 1
90	TF	II113	-	190(195.9)	+5.5	6.0	L	+6000	-	-	RNAV 1
100	TF	II114	-	100(105.9)	+5.5	5.0	L	+4500	-	-	RNAV 1
110	TF	APTOG	-	100(106.0)	+5.5	5.0	-	+4500	-	-2.8	RNAV 1

DOSOR 1M											
Serial Number	Path Descriptor	Waypoint Identifier	Fly - over	Course °M(°T)	Magnetic Variation(°)	Distance NM	Turn Direction	Altitude FT	Speed KT	VPA (°)	Navigation Specification
10	IF	DOSOR	-	-	+5.5	-	-	+FL140	-	-	RNAV 1
20	TF	II153	-	332(337.4)	+5.5	12.3	L	+10000	-	-2.3	RNAV 1
30	TF	REZEK	-	010(016.0)	+5.5	11.6	R	+6000	-230	-3.3	RNAV 1
40	TF	II121	-	280(286.0)	+5.5	5.0	L	+6000	-	-	RNAV 1
50	TF	II122	-	280(286.0)	+5.5	5.0	-	+6000	-	-	RNAV 1
60	TF	II113	-	010(015.9)	+5.5	6.0	R	+6000	-	-	RNAV 1
70	TF	II114	-	100(105.9)	+5.5	5.0	R	+4500	-	-	RNAV 1
80	TF	APTOG	-	100(106.0)	+5.5	5.0	-	+4500	-	-2.8	RNAV 1

KOLAM 1M											
Serial Number	Path Descriptor	Waypoint Identifier	Fly - over	Course °M(°T)	Magnetic Variation(°)	Distance NM	Turn Direction	Altitude FT	Speed KT	VPA (°)	Navigation Specification
10	IF	KOLAM	-	-	+5.5	-	-	-	-	-	RNAV 1
20	TF	II181	-	246(251.4)	+5.5	11.0	R	+FL140	-	-	RNAV 1
30	TF	II414	-	246(251.2)	+5.5	24.4	-	+FL120	-	-0.8	RNAV 1
40	TF	II413	-	281(286.4)	+5.5	8.4	R	+9500	-	-2.8	RNAV 1
50	TF	ROTEP	-	281(286.2)	+5.5	11.3	-	+6000	-230	-2.9	RNAV 1
60	TF	II111	-	281(286.1)	+5.5	5.0	-	+6000	-	-	RNAV 1
70	TF	II112	-	280(286.0)	+5.5	5.0	-	+6000	-	-	RNAV 1
80	TF	II113	-	190(195.9)	+5.5	6.0	L	+6000	-	-	RNAV 1
90	TF	II114	-	100(105.9)	+5.5	5.0	L	+4500	-	-	RNAV 1
100	TF	APTOG	-	100(106.0)	+5.5	5.0	-	+4500	-	-2.8	RNAV 1

TULGA 1M											
Serial Number	Path Descriptor	Waypoint Identifier	Fly - over	Course °M(°T)	Magnetic Variation(°)	Distance NM	Turn Direction	Altitude FT	Speed KT	VPA (°)	Navigation Specification
10	IF	TULGA	-	-	+5.5	-	-	-	-	-	RNAV 1
20	TF	II150	-	281(286.9)	+5.5	12.0	L	+FL170	-	-	RNAV 1
30	TF	II151	-	281(286.6)	+5.5	9.7	-	-	-	-1.9	RNAV 1
40	TF	II152	-	281(286.6)	+5.5	14.6	-	+FL140	-	-0.6	RNAV 1
50	TF	II153	-	281(286.4)	+5.5	15.0	-	+10000	-	-1.9	RNAV 1
60	TF	REZEK	-	010(016.0)	+5.5	11.6	R	+6000	-230	-3.3	RNAV 1
70	TF	II121	-	280(286.0)	+5.5	5.0	L	+6000	-	-	RNAV 1
80	TF	II122	-	280(286.0)	+5.5	5.0	-	+6000	-	-	RNAV 1
90	TF	II113	-	010(015.9)	+5.5	6.0	R	+6000	-	-	RNAV 1
100	TF	II114	-	100(105.9)	+5.5	5.0	R	+4500	-	-	RNAV 1
110	TF	APTOG	-	100(106.0)	+5.5	5.0	-	+4500	-	-2.8	RNAV 1

WAYPOINT LIST

WPT	COORD		WPT	COORD	
ADESA	420940.00N	0694854.00E	II121	422056.05N	0690351.82E
APTOG	422519.51N	0691234.86E	II122	422218.35N	0685722.68E
BAMUT	415124.00N	0692448.00E	II150	415715.78N	0695640.86E
BARAR	425030.00N	0700344.00E	II151	420003.70N	0694410.43E
DOSOR	415702.00N	0691225.00E	II152	420412.16N	0692526.61E
II103	424933.14N	0695012.33E	II153	420825.64N	0690603.02E
II104	424840.93N	0693806.67E	II181	423330.51N	0701133.62E
II105	424725.82N	0692113.01E	II413	422756.58N	0692930.83E
II106	424139.90N	0691857.25E	II414	422535.40N	0694022.65E
II111	423228.48N	0690819.49E	KOLAM	423702.00N	0702540.00E
II112	423351.02N	0690149.25E	REZEK	421933.39N	0691020.68E
II113	422804.71N	0685935.76E	ROTEP	423105.57N	0691449.44E
II114	422642.29N	0690605.45E	TULGA	415347.00N	0701204.00E